

CLINTON  
HILL

BROOKLYN  
NY

# 531 MYRTLE AVENUE

RKF



CONCEPTUAL RENDERING

# SPACE DETAILS

**LOCATION**

Northwest corner of Steuben Street

**SPACE**

Ground Floor 2,250 SF

**FRONTAGE**

22 FT 10 IN on Myrtle Avenue

**POSSESSION**

October 2016

**TERM**

Long term

**SITE STATUS**

New construction

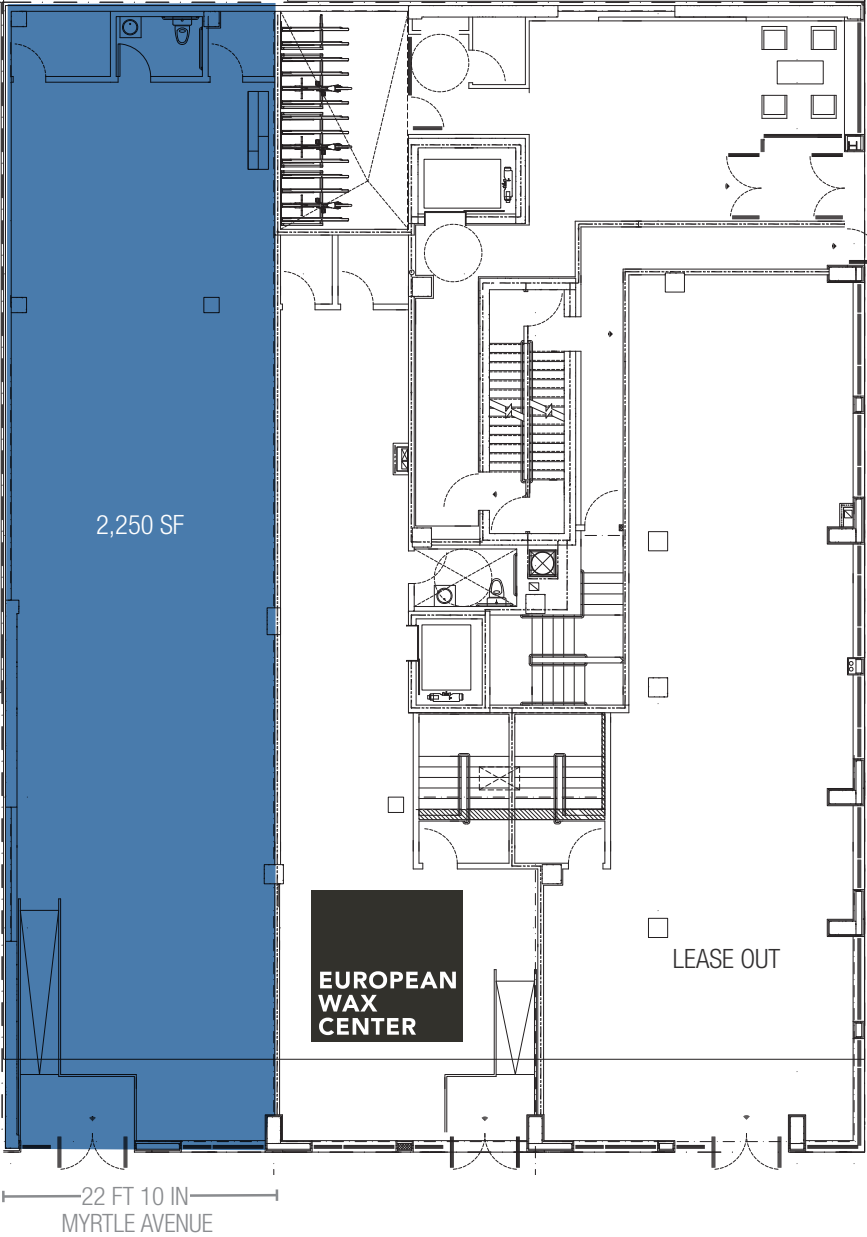
**NEIGHBORS**

Bergen Bagels, Blick Art Supplies, Dunkin' Donuts, TD Bank, Khim's Millenium Market and European Wax Center

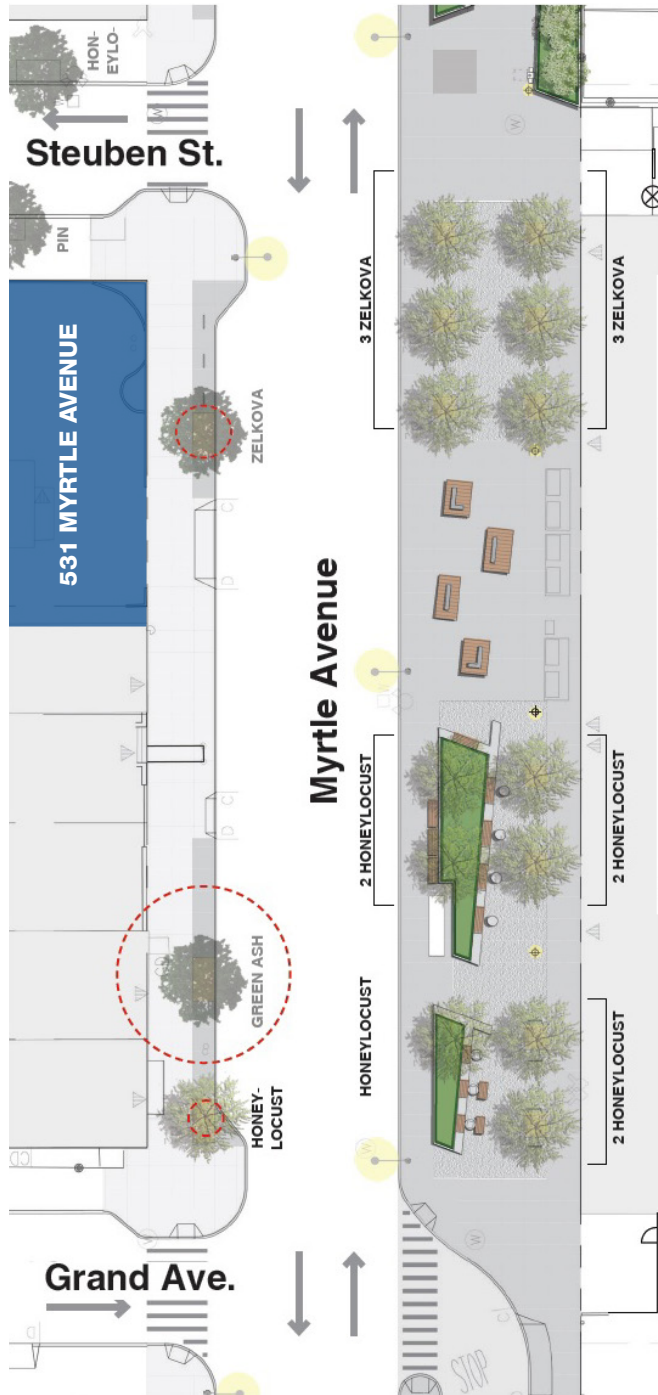
**COMMENT**

Directly across the street from Pratt Institute with over 5,000 students enrolled

**GROUND FLOOR**

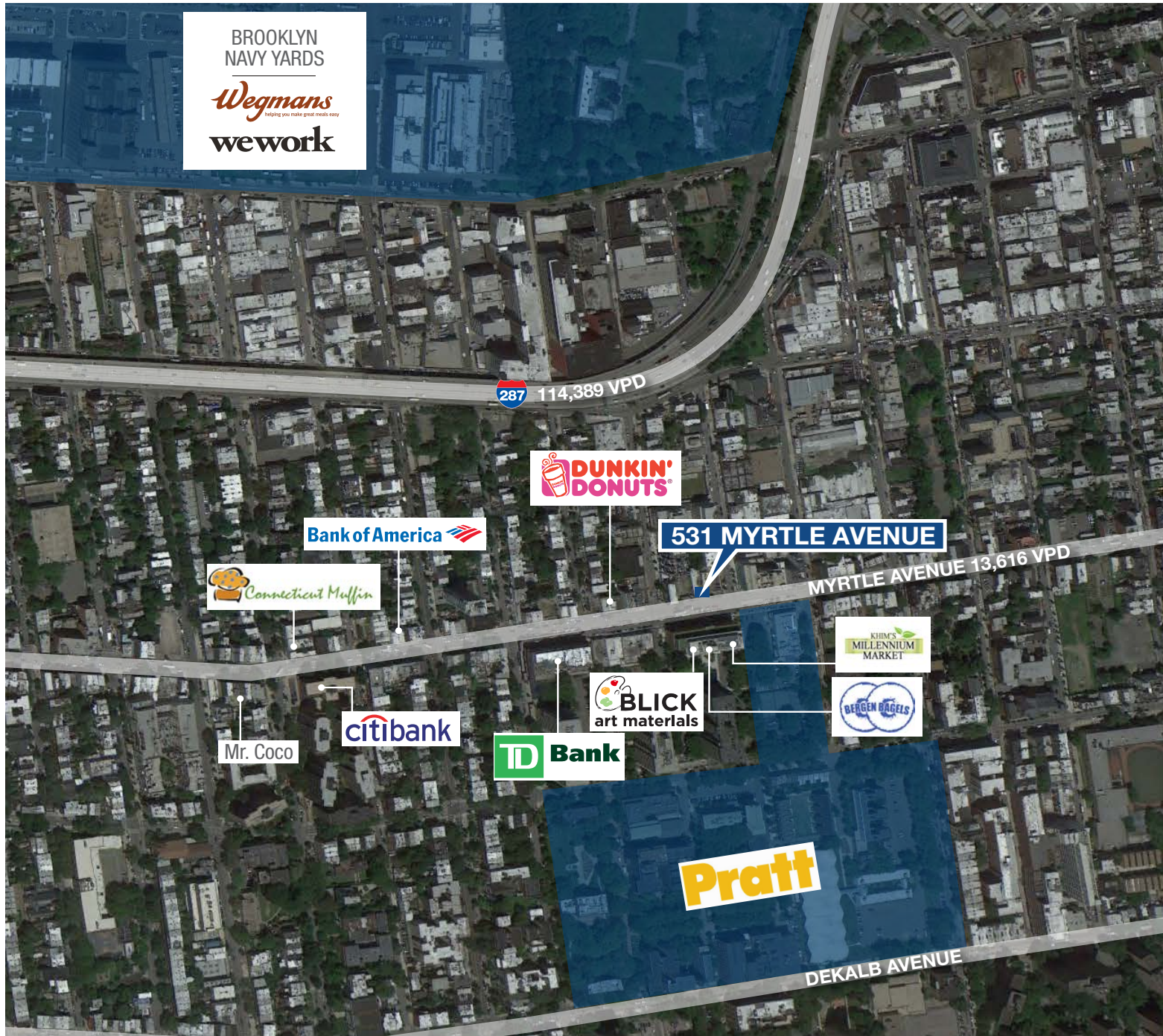


# PROPOSED PLAZA



- Key:**
- Shrub / Groundcover planting
  - Critical root zone
  - Proposed canopy tree
  - Proposed understory tree
  - Existing tree

# AREA RETAIL



531  
**MYRTLE**  
AVENUE  
BROOKLYN NY

## CONTACT AGENTS

**ALEX BEARD**

212.351.9341  
abeard@rkf.com

**BRANDON BERGER**

212.916.3390  
bberger@rkf.com

**EDDIE MAMIYE**

212.916.3386  
emamiye@rkf.com



**521 FIFTH AVENUE  
FLOOR 7  
NEW YORK, NY 10175**

212.599.3700  
INFO@RKf.COM  
RKf.COM

© 2016 ROBERT K. FUTTERMAN & ASSOCIATES, LLC All information is from sources believed reliable, not independently verified, and thus subject to errors, omissions, and modifications such as price, listing, square footage, rates and commissions. All information, estimates and projections subject to change, market assumptions, unknown facts and conditions, and future potentialities. RKf makes no express or implied representations or warranties, as facts and results may vary materially from all information, estimates and projections.

All renderings presented are conceptual.